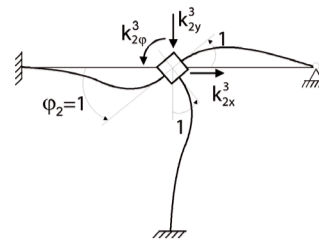


## Bachelorstudiengang – Bauingenieurwesen

## Modul 18 Statik und Tragwerkslehre B

- 124 003 **Baustatik II**  
2 St., Do. 10:00 - 11:30, HIC  
Beginn: 14.04.2016
- 124 004 **Übungen zu Baustatik II**  
1 St., Do. 11:30 - 12:15, HIC  
Beginn: 14.04.2016

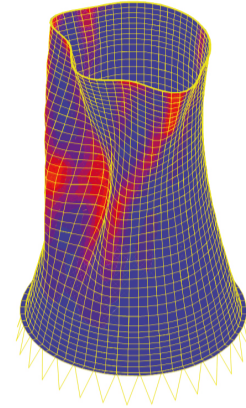
Freitag,  
Meschke

Hofmann, Mohseni

## Masterstudiengang – Bauingenieurwesen

## WP 05 Finite Elemente Methoden für nichtlineare Strukturanalysen

- 128 005 **Finite Elemente Methoden für materiell nichtlineare Strukturanalysen**  
Beginn: siehe Ankündigung am LS/Web
- 128 006 **Finite Elemente Methoden für geometrisch nichtlineare Strukturanalysen**  
Beginn: siehe Ankündigung am LS/Web
- 128 007 **Übung und Seminar: Nichtlineare Strukturanalysen im Ingenieurbau**  
Beginn: siehe Ankündigung am LS/Web



Meschke

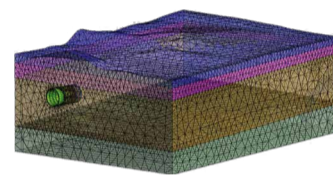
Meschke

Iskhakov, Zhan

Einführungsveranstaltung:  
am Mo., 11.04.16  
um 8:30, HIB

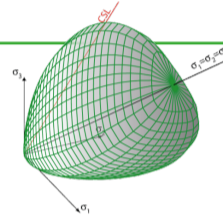
## WP 24 Numerische Simulationen im Grund- und Tunnelbau

- 128 017 **Numerische Simulation im Tunnelbau**  
Beginn: Siehe Information am LS/Web

Meschke,  
MarwanEinführungsveranstaltung:  
am Mo., 11.04.16  
um 8:30, HIB

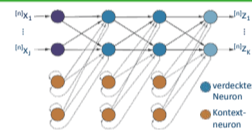
## WP 45 Materialmodelle für Geomaterialien

- 128 016 **Finite Elemente Methoden für elastoplastische Stoffgesetze**  
Beginn: siehe Ankündigung am LS/Web

Meschke,  
AlsahlyEinführungsveranstaltung:  
am Mo., 11.04.16  
um 8:30, HIB

## W 34 Tragwerksanalyse mit unscharfen Daten

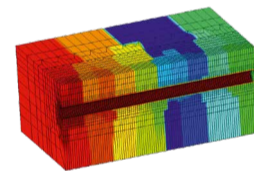
- 128 226 **Tragwerksanalyse mit unscharfen Daten**  
2 St., Di. 12:00 - 13:30, IC 03/653  
Beginn: 19.04.2016



Freitag

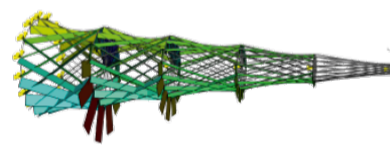
## W 35 Recent Advances in Numerical Modelling and Simulation

- 128 227 **Recent Advances in Numerical Modelling and Simulation**  
2St., Fr. 16:00 - 19:00, IC 03/649  
Beginn: siehe Ankündigung am LS/Web

Meschke,  
BuiEinführungsveranstaltung:  
am Mo., 11.04.16  
um 8:30, HIB

## W 39 Objektorientierte Modellierung und Programmierung der Finite-Elemente-Methode

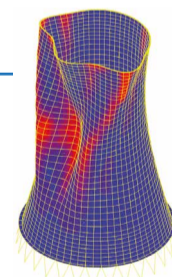
- 128 017 **Object-oriented Modelling and Implementation of Structural Analysis Software**  
(Blockveranstaltung - täglich)  
25.7.2016 - 05.08.2016  
Beginn: 25.07.2016

Baitsch,  
BuiEinführungsveranstaltung:  
am Mo., 11.04.16  
um 8:30, HIB

## Master Program – Computational Engineering

## CE-WP 04 Advanced Finite Element Methods

- 126 514 **Advanced Finite Element Methods**  
1st lecture: See information at institute/web
- 126 515 **Exercises in Advanced Finite Element Methods**  
1st lecture: See information at institute/web



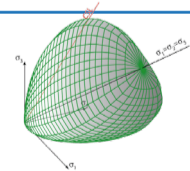
Meschke

Iskhakov, Zhan

Introductory course  
on Mon., 11.04.16  
at 8:30, HIB

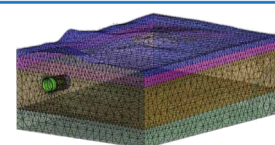
## CE-WP 06 FEM for Nonlinear Analysis of Materials and Structures

- 126 508 **Finite Element Method for Nonlinear Analysis of Materials and Structures**  
1st lecture: See information at institute/web

Meschke,  
AlsahlyIntroductory course  
on Mon., 11.04.16  
at 8:30, HIB

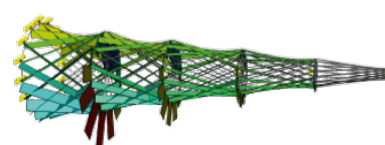
## CE-WP 09 Numerical Simulation in Geomechanics and Tunneling

- 128 018 **Numerical Simulation in Tunneling**  
1st lecture: See information at institute/web

Meschke,  
MarwanIntroductory course  
on Mon., 11.04.16  
at 8:30, HIB

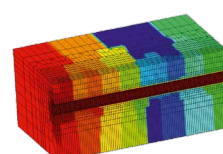
## CE-WP 10 OOFEM - Object-oriented Modelling &amp; Implementation of Structural Analysis Software

- 128 017 **Object-oriented Modelling and Implementation of Structural Analysis Software**  
(block course - every day)  
25.7.2016 - 05.08.2016  
1st lecture: 25.07.2016

Baitsch,  
BuiIntroductory course  
on Mon., 11.04.16  
at 8:30, HIB

## CE-W Recent Advances in Numerical Modelling and Simulation

- 128 227 **Recent Advances in Numerical Modelling and Simulation**  
2h., Fr. 16:00 - 19:00, IC 03/649  
1st lecture: See information at institute/web

Meschke,  
BuiIntroductory course  
on Mon., 11.04.16  
at 8:30, HIB